

EXPLORE THE MAASAI MARA WITH
Lalashe Maasai Mara
Small Intimate Luxury Tented Safari Lodge





Lalashé Maasai Mara



Total Number of Guests	16
Number of Suites	5
1 Family villa	1st of May 2025
1 Presidential Suite	1st of May 2025
Types of Packages	All Inclusive Safari Lodge
Seasons	Open Year Round

Lalashé Maasai Mara is a small intimate luxury tented safari lodge located in Maasai Mara, one of the best African Wildlife Safari destinations in the world.

Our Lodge's Guests Main Area faces a water hole that is frequented by lots of Wildlife in dry season but as well there is plenty of game anytime of the year around the lodge. This beautifully decorated areas feature infinity pool to dip in during the hottest hours of the day, indoor and outdoor relaxing lounges, dining spaces with a fully stocked all inclusive bar and a camp fire for evening drinks before dinners. There is a Library and Tv lounge as well for African wildlife movies with your guides when not out on drives or just after dinners.

Each of our luxury tented suites have excellent views of the open plains of Mara's ecosystem that gives all our guests arm chair safaris while relaxing in their rooms.

All our very spacious suites have very comfortable bedroom area, indoor lounging area, an all-inclusive private minibar, indoor and outdoor showers, Plunge pool with sunbeds area for our guests to enjoy while in the lodge.



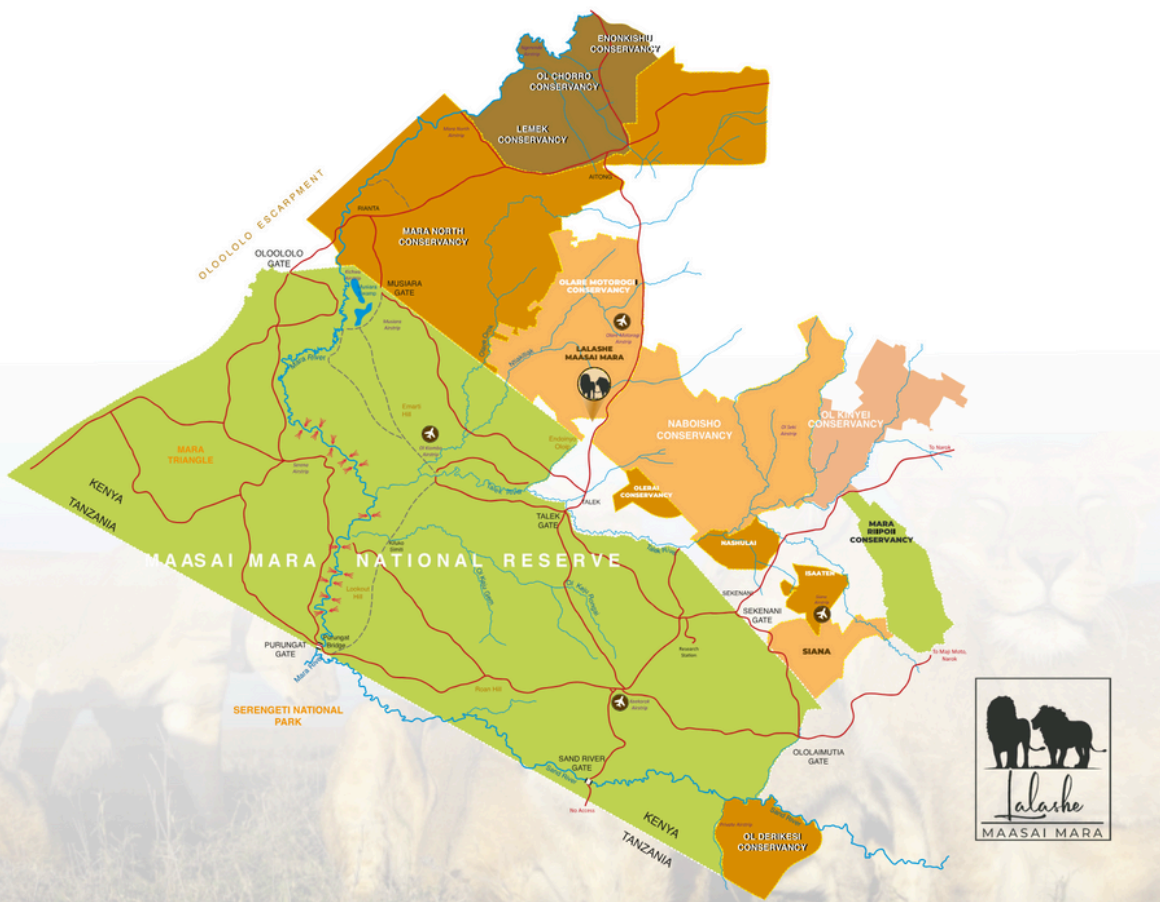
VIEW LALASHE MAASAI MARA IMAGES



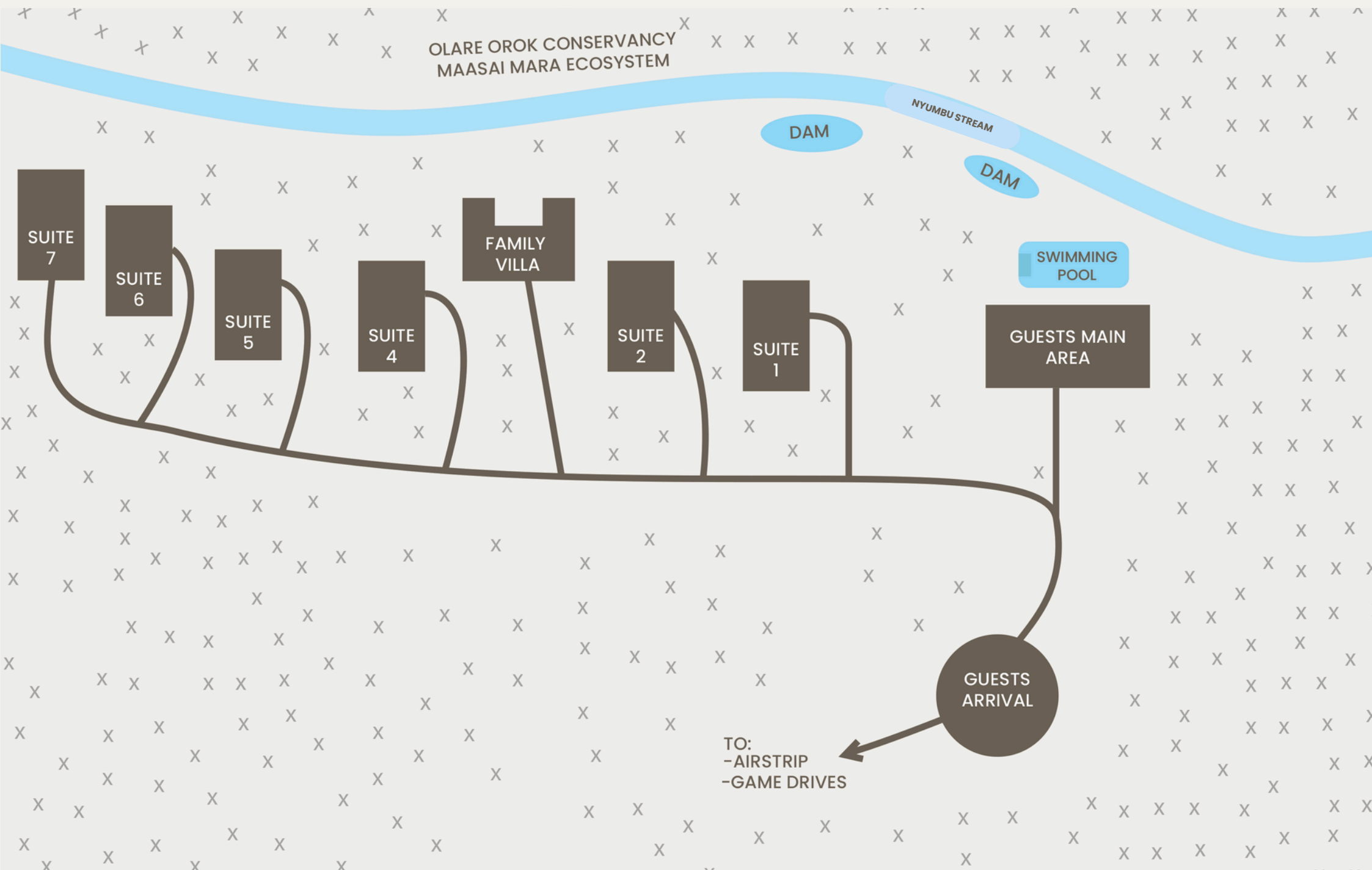
Location

Maasai Mara Game Reserve is located in Southern Kenya and It is considered as one of the most premium Wildlife Parks in Africa for Wildlife Safaris where we have plenty of game throughout the year. Between July to October, we have THE GREAT WILDBEESTS MIGRATION where over 2 million wildebeests and Zebras being accompanied by some other antelopes migrate from Serengeti National Park in Tanzania to Maasai Mara in Kenya. It is during this time of the year where we witness a lot of predator actions both on the land with Cats and in Rivers infested with crocodiles. It is once in a lifetime experience not to be missed and Lalashe Guides are very passionate in making this a reality for you and your safari Companions.

Lalashe Maasai Mara is located in Olare Orok Conservancy about 10 minutes of drive through the conservancy into the Main Reserve in Maasai Mara Ecosystem where we are able to access very prime locations in the Mara within short drives. In one day, we get to spend morning hours in one location and afternoon in another location which is not possible in many camps in the Mara. Our location is Central and we guarantee our guests memorable safaris.



Lalashé Maasai Mara Layout Plan



Lodge's Overview

SWIMMING POOL	✓
SUITE'S PRIVATE PLUNGE POOL	✓
RELAXING INDOOR LOUNGES	✓
RELAXING OUTDOOR LOUNGES	✓
CAMP/BONFIRE	✓
BAR LOUNGE	✓
SATELLITE TV LOUNGE	✓
FRONT OFFICE DESK	✓
INDOOR RESTAURANT	✓
OUTDOOR DINING AREAS	✓
SPA	× - Available from 1st of May 2025 (All treatments are currently done in the suites)
GYM	× - Available from 1st of 2025

POWER	✓ 24/7
PLUG POINTS	✓ 240V
COMPLIMENTARY WI-FI /INTERNET ACCESS	✓ The connection may be slow or intermittent due to the remote location of the lodge
LAUNDRY SERVICE	✓
PLATED SERVICE/ A LA CARTE	✓ We go bespoke based on our guests' preferences
PAYMENT METHODS	✓ Visa and master cards, Cash Not Accepted
CURRENCY	✓ USD, EUROS and Ksh
CHECKIN TIME	✓ 12:00
CHECKOUT TIME	✓ 10:00

Suites' Amenities

SUITE SIZES IN SQUARE METERS /FEET	205M²/ 2,210 F²
DOUBLE SUITES	✓
TWIN SUITES	✓ Beds within same Bed/Mosquito Frame
TRIPLE SUITES	✓ Third Bed within same bed/mosquito frame
FAMILY VILLA	✓ Two interconnected Suites with a private lounge and dining in the middle. Available from 1st of May 2025
EN-SUITE BATHROOMS AND INDOORSHOWERS	✓
OUTDOOR SHOWERS	✓
BATHTUB	✓
PRIVATE PLUNGE POOL	✓
SUNBEDS	✓
INDOOR LOUNGE	✓
PRIVATE OUTDOOR LOUNGE	✓
PRIVATE BALCONY	✓
HAIRDRYERS	✓
PRIVATE COFFEE /TEA STATION WITH GOOD SELECTION OF TEA VARIETIES	✓

PRIVATE MINI BAR STOCKED WITH INHOUSE BEERS, WINES, SOFT DRINKS AND SOME SPIRITS OF YOUR CHOICE	✓
TELEPHONES	✓
FLOOR FANS	✓
CEILING FANS/OVER THE BED FANS	✓
MOSQUITO NETS	✓
IN ROOM SAFE	✓
PRIVATE BUTLER	✓
LAUNDRY SERVICE	✓
IN ROOM SPA TREATMENTS	✓
BATHROBES	✓
SHAVING MIRRORS	✓
EXTRA TOWELS	✓
STUDY DESK	✓
YOGA MATS	✓
WI-FI	✓
DISABILITY FRIENDLY ROOMS	Enquire with Reservations



Inclusions

At Lalashe Mara, we are an All-Inclusive Safari Camp with only one package.



	GAME PACKAGE RATE
ALL MEALS (BREAKFAST, LUNCH AND DINNER)	✓
LAUNDRY SERVICE	✓
SELECTED ALCOHOLIC AND NON-ALCOHOLIC DRINKS IN THE CAMP AND ON SAFARI, SOME PREMIUM DRINKS INCLUDED	✓
COMPLIMENTARY 60-MINUTE SWEDISH BODY MASSAGE PER GUEST PER STAY	✓
PRIVATE BUTLER	✓
SUNDOWNERS	✓
WALKING SAFARI	✓
NIGHT GAME DRIVES	✓
BUBBLY BREAKFAST	✓
PRIVATE BUSH BREAKFAST/BRUNCH/ BUSH DINNER	✓
COMPLIMENTARY PRIVATE ROOM SERVICE	✓
PRIVATE DINNER UNDER THE STARS WEATHER PERMITTING	✓
PRIVATE BUSH BREAKFASTS/LUNCHESES/DINNERS	✓
UNLIMITED GAME DRIVES/SAFARIS	✓
PRIVATE GAME VIEWER AND SAFARI GUIDE	✓
GAME DRIVES IN OPEN 4X4 SAFARI GAME VIEWERS	✓
AIRSTRIPS/TALEK, MUSIARA & SEKENANI GATE TRANSFERS	✓

Activities



Day Game drives (Safaris)

Guides. Each and every individual booking is assigned a private guide and 4x4 open sided Game viewer, No shared Game drives and this gives our guests unlimited time to plan their time as per their wish without having to consult other guests.

In Lalashe Maasai Mara all our Safaris are done in the Main Reserve twice a day, early in the morning before sunrise and late in the evening before sunsets but our guests will always plan with their guides what it suits them the best. Our 4x4 customised safari vehicles depart early in the morning, and late in the afternoon when the temperature is cooler and the big cats and other game is more active. This is also the best time for our photography enthusiasts, as the lighting is still soft. Our expert guide will guide you through the Magical Maasai Mara, while you encounter the Big Five and the other wildlife.



Walking Safaris

This is the best way of getting closer to nature. Your senses of sight, smell, taste, touch and hearing would be put to action at every step; Here you will step out of your safari vehicle and our qualified naturalists and experienced guides will lead this walking safari. Get closer to the giraffes, zebras, impalas and other plains game, smell some of the plants, taste some of the edible plants, touch some of the wildlife products, hear those snorting impala rams roaring, identify foot prints left by lions or leopards at night and other game and identify some interesting small game like spiders, butterflies, dung beetles, termites amongst others.



Cultural Visits

Visit one of the villages in the Mara and learn a lot about our Maasai people and their interesting cultures. Here you will photograph Maasai warriors and women as they take you through their different entertaining songs with great jumps and moves. They will also welcome you to join them at your own comfort. Thereafter the Maasai cultural guide will take you to see Maasai huts and the cattle/sheep/goat's lion proof kraal or boma. You will also get to learn and experience their culture.

Activities



Balloon Rides

Seeing Mara and its great wildlife from above is just breathtaking. Balloon rides last for about 45 minutes to about 1 Hour 15 minutes before having our famous champagne breakfast. This experience is not inclusive of our rates and is paid for separately. Please contact our reservation desk or your preferred travel agent for rates.



Photographic Safaris

Whether you are a professional photographer leading your small group of visitors on a photographic safari, are just a photography enthusiast yourself, we can assist you in following some of the great wildlife Kenya has to offer. Our open-sided 4x4 safari vehicles are custom made for photography and thus offer you great opportunity to capture some great images.



Sundowners

Our afternoon game drives offer our guests fantastic wildlife sightings. As the temperature cool, and the sun dips below the horizon, the bush comes alive. Big cats awaken from their daytime rest and bush's nocturnal residents become active. As the day transitions into evening, our guides will find a safe spot to stop the game drive vehicles, and treat our guests to a sundowner where guests will get opportunity to watch African sun setting down.



Rhino Sanctuary Visits

Rhinos are some of the rare species to be spotted in the world. While on safari in Maasai Mara we will be able to take you to one and only White Rhino Conservation Sanctuary in the Mara where two Rhinos Koffi Annan (Male) and Queen Elizabeth (Female) resides. The drive is almost one hour 20 minutes from the camp and the experience is worth it. The rangers will go on a short walk with you as you search for them. Once with them you will be amazed by their close encounter on foot.



The Great Migration

The Great Migration is the largest herd-movement of animals on the planet with over 2 Million individuals and as such it is considered as one of the 7 Natural wonders of the world. This annual movement (January to December) happens between Serengeti-Mara ecosystem in Tanzania and Kenya.

The migration comprises of over 1.5 million Wildebeests, 450 000 Zebras, 200 000 Thompson's Gazelles and 20 000 Elands and some Topis. Their movement is weathered controlled, they follow the rains for better greener pastures and water. It is approximated that each individual covers 800km-1000km.

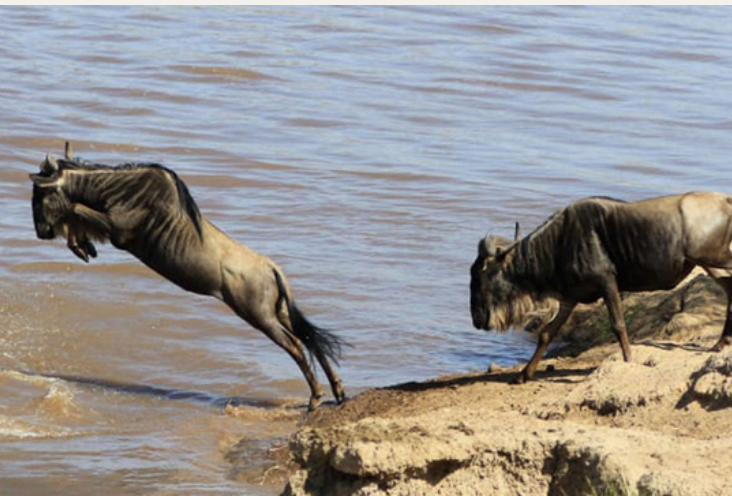
This special occasion which it is one of the most sought-after wildlife experience by nature enthusiasts happens between July to October in Maasai Mara (It in some years changes, they either come abit earlier or they leave abit earlier as well).

In the Mara they have to cross Sand River, Mara River and Talek River and as well to cut across the plains and it is here where our very passionate and experienced Lalashe Maasai Mara guides leads our guests to witness this once in a lifetime experience.

Weather and Temperatures

East Africa is equatorial, so the climate is fairly constant, making Maasai Mara a perfect all year safari destination. Here the climate is pleasantly warm with cool nights, all year round. The area is located just south of the Equator, but at an altitude between 1,500 and 1,900 meters (5,000 and 6,200 feet). There are two rainy seasons, Intermittent rains occur from March to May, and the other scattered rains occurs from October to December. But in the two rainy seasons all rains happen mostly late in the evenings or at nights. These rains transform the landscape into lush green grasslands teeming with diverse wildlife. June to September and December to February are fairly dry but some days may experience some rains. July is one of the cooler months in the mornings than other months.

The amount of sunshine in Masai Mara is good all year round, since the sky is often clear, although there may be some afternoon cloudiness, Average sunshine hours per day is 9 Hours



A day in the life

OF OUR GUEST

Our guests depending on the duration of stay with us will choose with our guidance on the activities to partake. Below is just an example of so many of itineraries on how different days will look like. We recommend at least 3 Nights of stay with us to enjoy our lodge and to at least experience all the activities for life changing moments.

TIMES	ACTIVITY
5:30 AM	Wake Up Call
6:00 AM	Departing the lodge for safari
9:00 AM	Tea/Coffee stop on safari
11:00	Brunch
13:00	Lunch if Brunch was skipped
15:30	Afternoon Tea at Main Lounge
16:00	Depart the lodge for safari or any other activity
19:00	Back at the lodge for Bonfire pre-dinner drinks or to freshen up
20:00	Dinner at the Lodge

What to pack?

When you are planning your safari holiday with us we would like to kindly request you to go through our advice below so that you will be able to know on what to pack to travel with.

Baggage:

- We recommend soft bags which are lockable and each with a maximum of 15 Kilos per person as this will be allowed in most internal flights between your safari destinations and as well they will very comfortably fit into our Safari Vehicles.
- Also ensure you have your small carry-on soft bag for your valuables.
- In case of extra luggage please get in touch with us and we will be able to book extra seat in the aircraft or if you are travelling by road, we will figure out on how many of you are in the safari vehicle

Clothing

We highly recommend that you bring Khaki or jungle green coloured clothes. Any bright colours should be avoided while on safari, but you may bring them for beach holidays in case you have one after your stay with us. Clothing that are similar to Game Rangers which they use during patrol for camouflage should be avoided.

- Flat comfortable shoes
- Flip Flops
- 2 Pairs of trousers
- 1 Pair of safari shorts
- 2 Pairs of shirts
- 1 Pair of long sleeved shirts
- 1 pair of short sleeved shirts
- 1 Hat
- 1 Peak cap
- 1 Jacket
- 1 Sweater
- 1 Swimsuit
- 4 Pairs of socks
- 1 Belt
- 1 Payjama

Equipment & Electricals

- Binoculars
- Guides books, birds & Mammals
- Rechargeable Torch
- Watch
- Sunglass
- Respective Chargers
- Extra Camera batteries
- Converter plug sets/3/2 pins

Travel Documents

- Passports with visa entries
- International & local flight tickets
- Cash in USD in all denominations
- Credit cards mostly visa and master cards
- Vaccination Certificates

Medical & Toiletries

- Sunscreens /cream
- Lip Balm
- Insect Repellant
- Malaria Prophylaxis
- Drugs from your doctor
- Toothbrush
- Tooth paste
- Deodorants
- Ear Plugs & Eye pad

Accessing The Lodge



By Air

We mostly work with Two Airlines that operate daily flights to Maasai Mara. Flights are approximately 45 Minutes to Olkiombo Airstrip where you will be met by our one of our safari guides. Drive from Airstrip to the Lodge is about 20 minutes but it can be an more if you are doing safari enroute the lodge.

Flights to Maasai Mara from Nairobi

First flights leave between 8am to 10am for Maasai Mara and second and last flights leave between 1:30PM to 3pm

Flights from Maasai Mara to Nairobi

First flights leave between 8:45am to 11:30am for Wilson Airport in Nairobi and second and last flights leave between 2:30PM to 4pm

Private Charters may as well be organized for you by our team.

Minimum of 15kgs luggage are required by person. Bags as well should be soft sided so that they are easy to fit into the Planes and Safari vehicles.

By Road

Scenic drive through Kenya's Rift valley takes about 5 Hours from Nairobi on a tarmacked road to the camp and another 30 Minutes on untarmacked road to the camp.

Enquiries

At Lalashe Mara all our Reservations Staff love what they do; To Plan, Guide ,Book our guests to our camps and lodges and ensure their stay is a memorable one from day one to the very last day of Stay with us.

Our reservations office will always be available for bookings or enquiries from 0700Hours to 2200Hours East Africa Time Zone Eastern Africa Time – EAT Time Zone (timeanddate.com).

RESERVATIONS ENQUIRIES



+254 727 111 197 – Tel /WhatsApp



www.lalashemara.com



reservations@lalashemara.com

SALES & MARKETING ENQUIRIES



+254 727 111 197



sales@lalashemara.com

